



HALL COUNTY
 GEORGIA *We have it all in Hall*

**SINGLE COUNTY
 TRANSPORTATION
 SPLOST REFERENDUM:
 NOV. 5, 2024**

ALL ABOUT ROUNDABOUTS

STEP ONE :

Yield to oncoming traffic before entering the circle.

STEP FOUR :

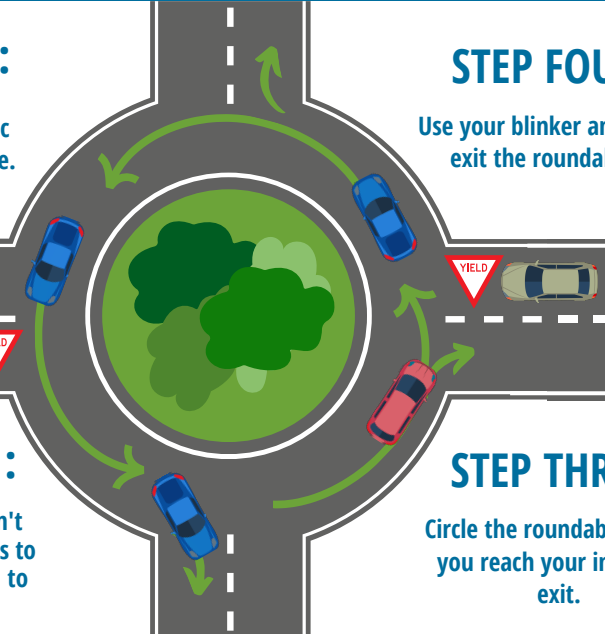
Use your blinker and safely exit the roundabout.

STEP TWO :

Once in the circle, don't stop to allow other cars to enter; they must yield to you.

STEP THREE :

Circle the roundabout until you reach your intended exit.



90% REDUCTION IN FATAL CRASHES

Cheaper to maintain than other types of intersections

IMPROVE TRAFFIC FLOW

REDUCE CARBON EMISSIONS BY **37%**

Reduce fuel consumption by up to 30%

SAFER FOR PEDESTRIAN CROSSING

Source: Arkansas Department of Transportation

www.hallcounty.org

770-535-8288



HALL COUNTY
 GEORGIA *We have it all in Hall*

**SINGLE COUNTY
 TRANSPORTATION
 SPLOST REFERENDUM:
 NOV. 5, 2024**

SINGLE COUNTY TRANSPORTATION SPLOST

A Transportation Special Purpose Local Option Sales Tax (Transportation SPLOST) is a 1% sales tax collected on the sales of certain goods and services over a five-year period for a specific program of transportation projects. For a Transportation SPLOST to be enacted, it must be approved by voters in a referendum.

The Transportation SPLOST can be used for 'transportation purposes' including roads, bridges, sidewalks and all accompanying infrastructure and services necessary to provide access to these facilities.

Utilizing sales tax to raise funds transfers the burden of funding from a limited group of land and property owners within Hall County to a broader spectrum of sales tax payers who do not necessarily reside in Hall County. Conservative estimates for revenues for the single county TSPLOST total \$390 million.

Several proposed intersection improvements for the Hall County Transportation SPLOST include the installation of roundabouts at congested intersections.



www.hallcounty.org

770-535-8288



HALL COUNTY
 GEORGIA *We have it all in Hall*

**SINGLE COUNTY
 TRANSPORTATION
 SPLOST REFERENDUM:
 NOV. 5, 2024**

SINGLE COUNTY TRANSPORTATION SPLOST

A Transportation Special Purpose Local Option Sales Tax (TSPLOST) is a 1% sales tax collected on the sales of certain goods and services over a five-year period for a specific program of transportation projects. For a TSPLOST to be enacted, it must be approved by voters in a referendum.

The TSPLOST can be used for 'transportation purposes' including roads, bridges, sidewalks and all accompanying infrastructure and services necessary to provide access to these facilities.

Utilizing sales tax to raise funds transfers the burden of funding from a limited group of land and property owners within Hall County to a broader spectrum of sales tax payers who do not necessarily reside in Hall County. Conservative estimates for revenues for the single county TSPLOST total \$390 million.

Several proposed intersection improvements for the Hall County TSPLOST include the installation of roundabouts at congested intersections.



www.hallcounty.org

770-535-8288



HALL COUNTY
 GEORGIA *We have it all in Hall*

**SINGLE COUNTY
 TRANSPORTATION
 SPLOST REFERENDUM:
 NOV. 5, 2024**

ALL ABOUT ROUNDABOUTS

STEP ONE :

Yield to oncoming traffic before entering the circle.

STEP FOUR :

Use your blinker and safely exit the roundabout.

STEP TWO :

Once in the circle, don't stop to allow other cars to enter; they must yield to you.

STEP THREE :

Circle the roundabout until you reach your intended exit.



90% REDUCTION IN FATAL CRASHES

Cheaper to maintain than other types of intersections

IMPROVE TRAFFIC FLOW

REDUCE CARBON EMISSIONS BY **37%**

Reduce fuel consumption by up to 30%

SAFER FOR PEDESTRIAN CROSSING

Source: Arkansas Department of Transportation

www.hallcounty.org

770-535-8288