

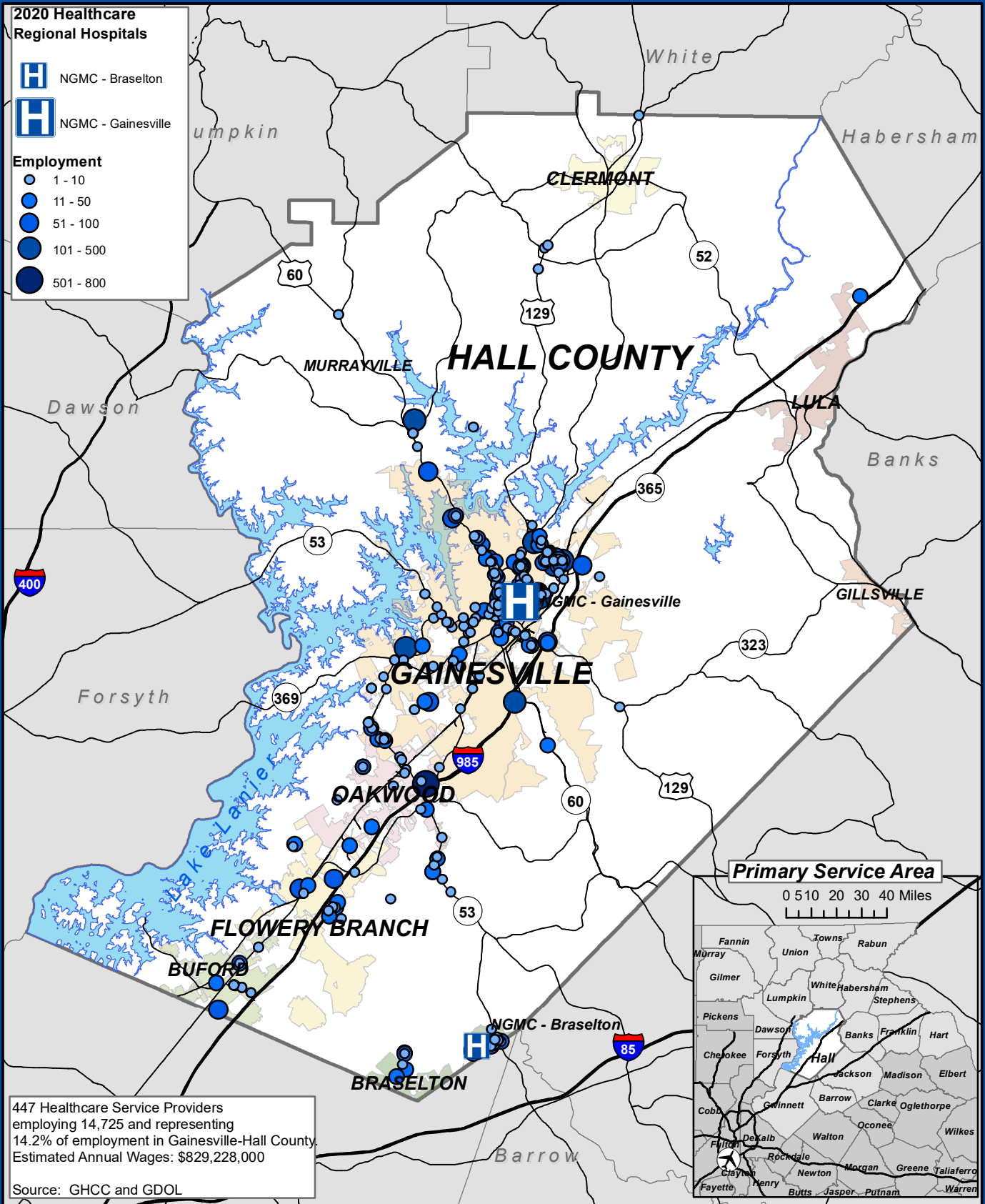


2020 Healthcare Regional Hospitals

-  NGMC - Braselton
-  NGMC - Gainesville

Employment

-  1 - 10
-  11 - 50
-  51 - 100
-  101 - 500
-  501 - 800

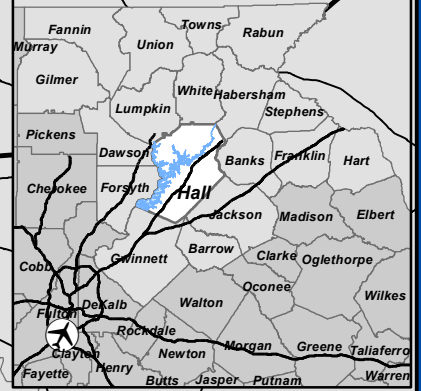


447 Healthcare Service Providers
 employing 14,725 and representing
 14.2% of employment in Gainesville-Hall County
 Estimated Annual Wages: \$829,228,000

Source: GHCC and GDOL

Primary Service Area

0 5 10 20 30 40 Miles




GREATER HALL
 CHAMBER OF COMMERCE
 10/1/20
www.greaterhallchamber.com

**Healthcare Services - 2020
 Gainesville-Hall County MSA, GA**

