

# Gainesville-Hall County Top Employers 2017

## Top 20 Employers

Northeast Georgia Medical Center (2)	7,900	Gold Creek Foods	980
Hall County School System	3,500	Wal-Mart (4)	970
Fieldale Farms Corporation (2)	2,550	Gainesville City School System	940
Hall County Government	1,500	Mars Wrigley confectionery	900
Pilgrims	1,380	The Longstreet Clinic, P.C.	760
Victory Processing, LLC (2)	1,310	Gainesville City Government	750
Kubota Manufacturing of America	1,300	King's Hawaiian Bakery East	650
Mar-Jac Poultry, Inc.	1,250	Mansfield Oil Company of Gainesville	620
ZF Gainesville, LLC (4)	1,150	Lanier Islands	600
Cottrell, Inc.	990	PERFORMANCE Food Service	580

## Top 10 Existing Industries

Fieldale Farms Corporation (2)	2,550	Poultry Processing
Pilgrims	1,390	Poultry Processing
Victory Processing, LLC	1,310	Poultry Processing - Sizing
Kubota Manufacturing of America	1,300	Manufacturing - Tractors & RTV's
Mar-Jac Poultry, Inc.	1,250	Poultry Processing
ZF Gainesville, LLC (4)	1,150	Manufacturing - Automotive & Wind Turbine Components
Cottrell, Inc.	990	Car Haulers
Gold Creek Foods	970	Poultry Processing
Mars Wrigley Confectionery	900	Manufacturing - Chewing Gum
King's Hawaiian Bakery East	650	Commercial Bakery

## Top 10 International Firms

Pilgrims	1,380	Poultry Processing	Brazil
Kubota Manufacturing of America	1,300	Tractors & RTV's	Japan
ZF Gainesville, LLC (3)	1,150	Automotive & Wind Turbine Components	Germany
KIK Gainesville	470	Contract Filler	Canada
Sapa Extruder, Inc.	400	Painted Aluminum Extrusions	Norway
Baldor Electric	330	Electric Motors	Switzerland
IMS Gear Georgia, Inc.	320	Plastic, Metal & Assembled Components	Germany
ElringKlinger USA, Inc.	300	Automotive Thermal Shield	Germany
Marel, Inc.	290	Food Processing Equipment	Iceland
Beaulieu of America	270	Textile - Yarn Division	Belgium

## Top 5 Non-Manufacturing Firms

*(Excludes Government and Education)*

Northeast Georgia Medical System (2)	7,900
Wal-Mart (2)	972
The Longstreet Clinic, P.C.	760
Mansfield Oil Company	620
Lanier Islands	600

*All listings by number of employees in 2016*

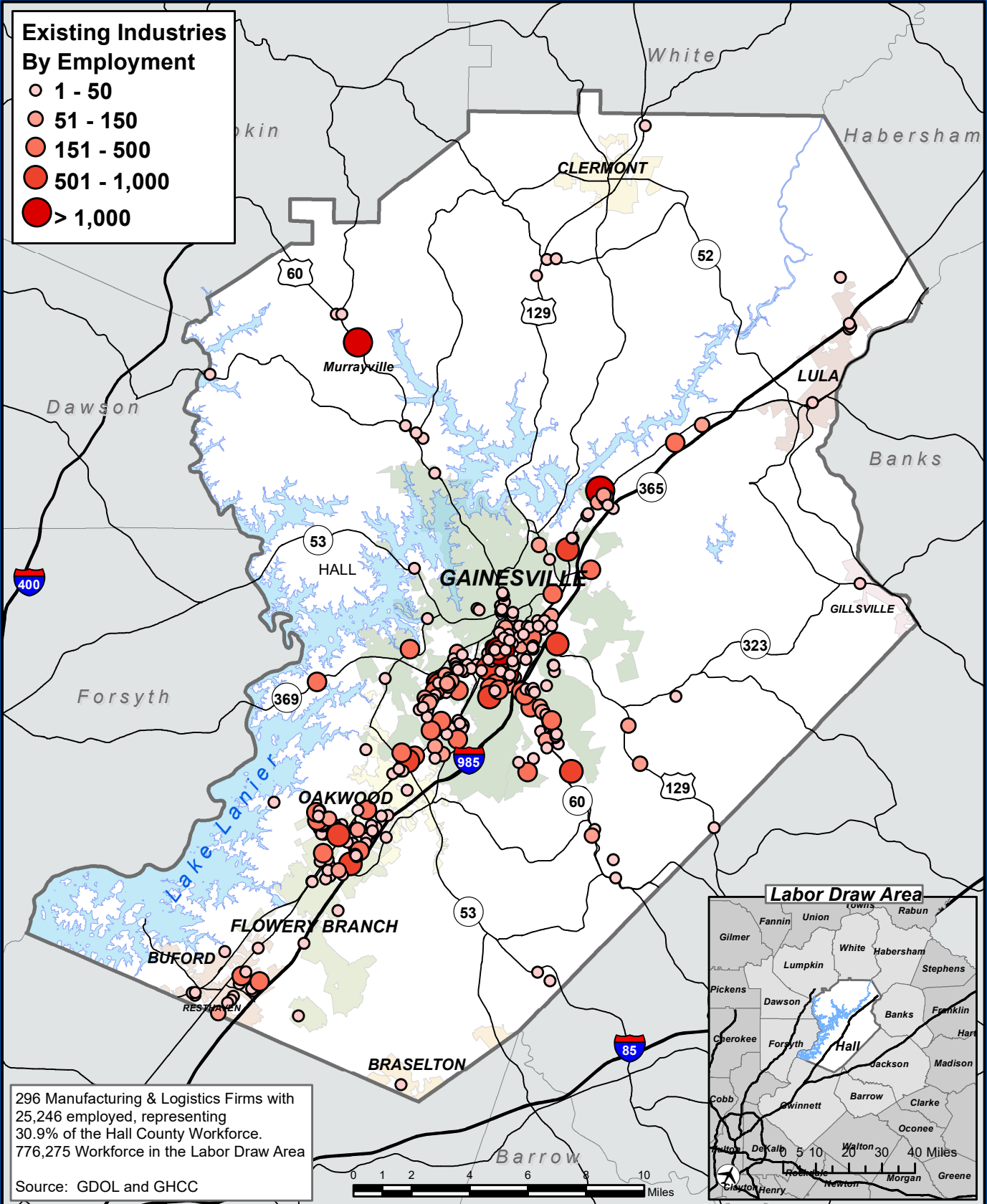


Shelley Davis, Vice President, Existing Industry  
 Greater Hall Chamber of Commerce  
 Economic Development Division  
 Phone: 770-532-6206 • Email: sdavis@gbcc.com

January 2017

**Existing Industries  
By Employment**

- 1 - 50
- 51 - 150
- 151 - 500
- 501 - 1,000
- > 1,000



296 Manufacturing & Logistics Firms with  
25,246 employed, representing  
30.9% of the Hall County Workforce.  
776,275 Workforce in the Labor Draw Area

Source: GDOL and GHCC

